

Fisher & Paykel

Front Loading Clothes Dryer

DE7027J1 FP US

Product Code: 96202-A

Parts Manual

Brand: Fisher & Paykel

Voltage: 240V, 60Hz

Model: DE7027J1 FP US

Product Code: 96202-A

Models

- The information detailed in this manual is subject to change without notice. The latest version is indicated by the reprint date and replaces any earlier editions.

Kit Parts

Kit components are shown in *italics*. Where a part number is shown against the descriptions for these kit components, they are also available as separate items. In addition, some parts may be supplied with these kits that are not available as separate items, and are therefore either not listed, or a part number is not shown against the part description in this manual.

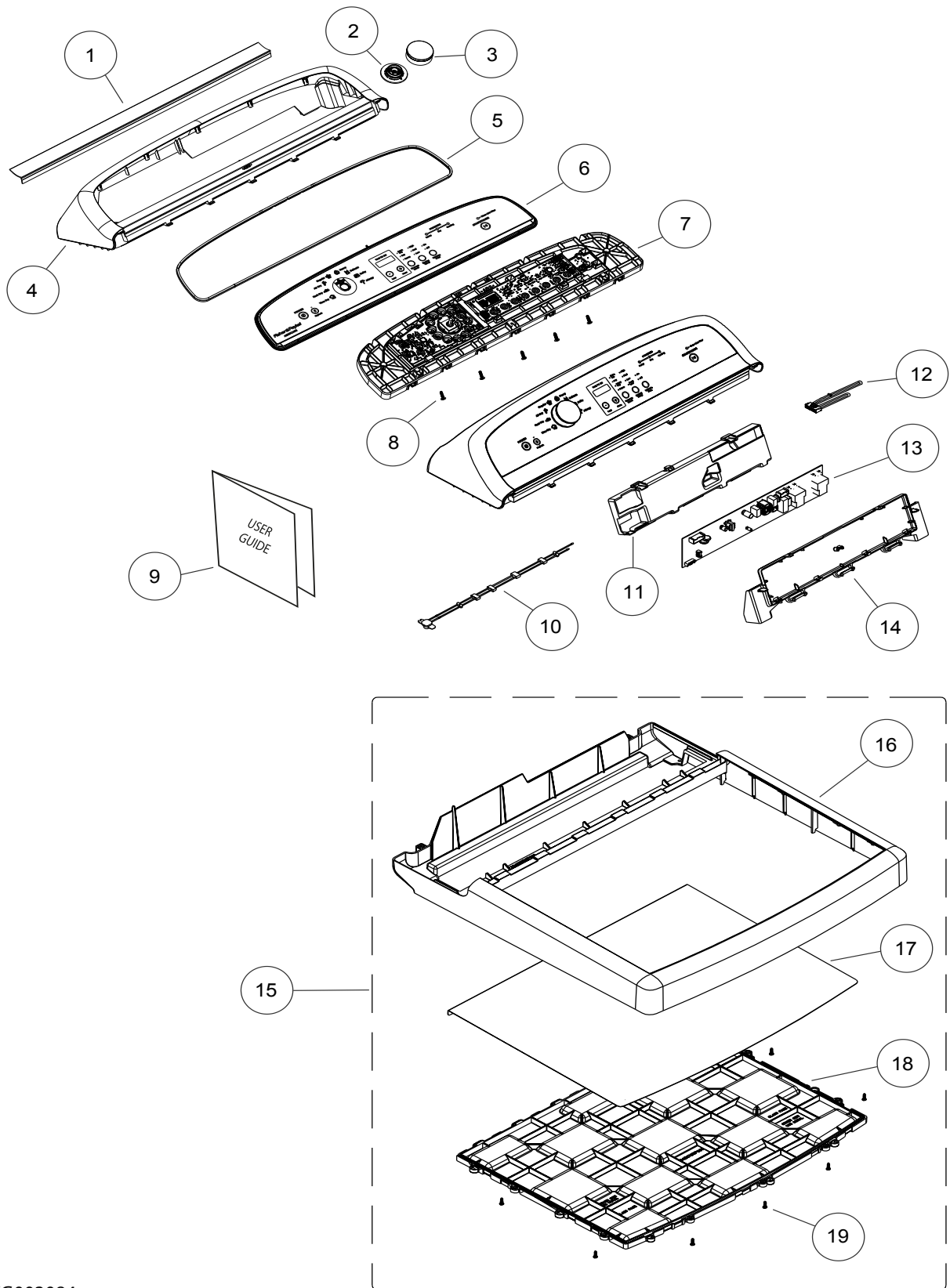
Parts List Key

<i>italics</i>	Kit components or parts included are shown in italics. Refer to above notes: Kit Parts.
NI	As a part reference, indicates the part is not illustrated on the diagram.
NOT USED	As a part number, indicates the diagram part reference is not used in this manual.

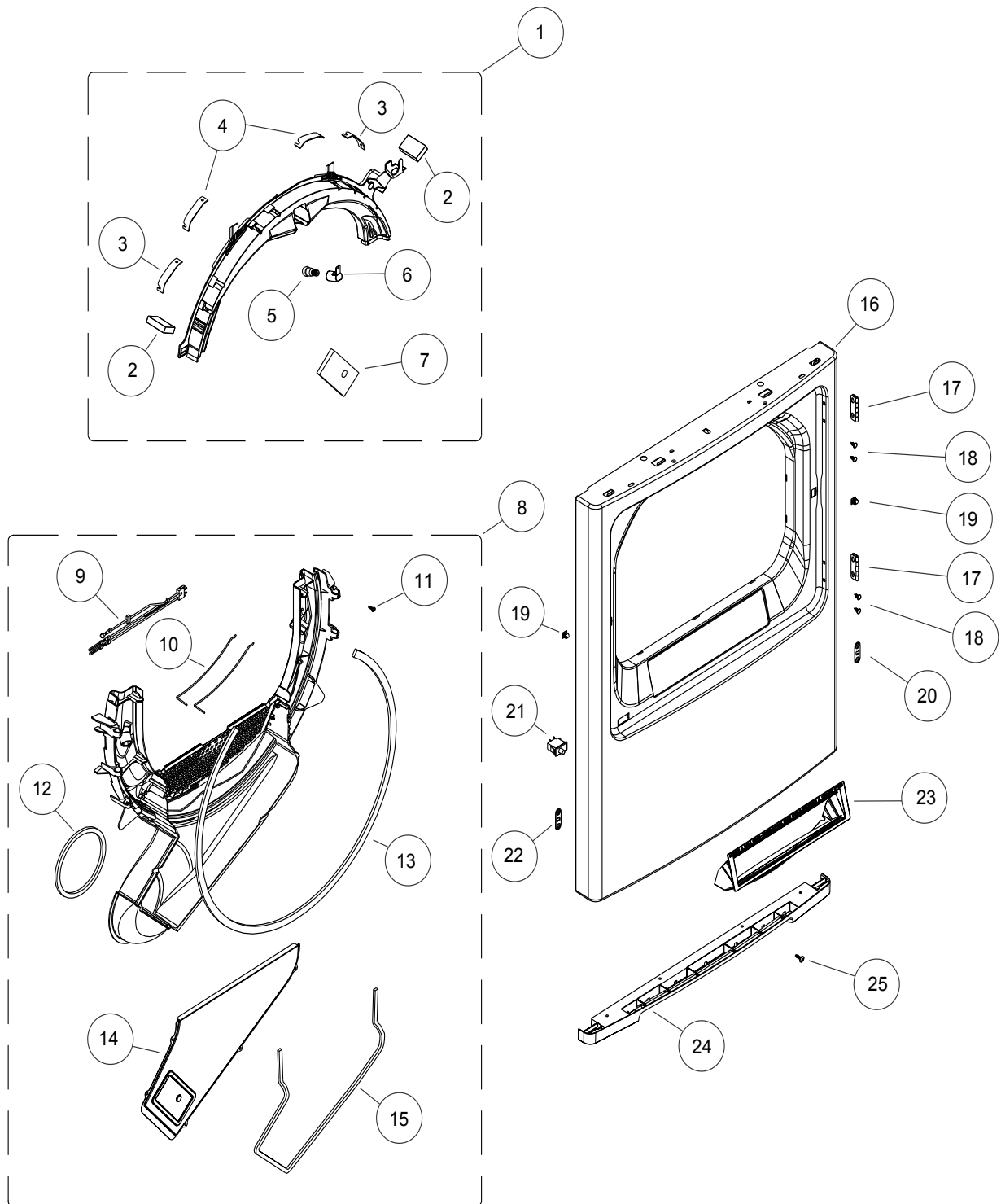
CONSOLE & ELECTRONIC COMPONENTS	4
FRONT PANEL COMPONENTS	6
DOOR COMPONENTS	8
CABINET COMPONENTS	10
BLOWER & DRIVE COMPONENTS	12
DRUM COMPONENTS	14

Fisher & Paykel Appliances Inc
5900 Skylab Road
Huntington Beach, CA92647
USA

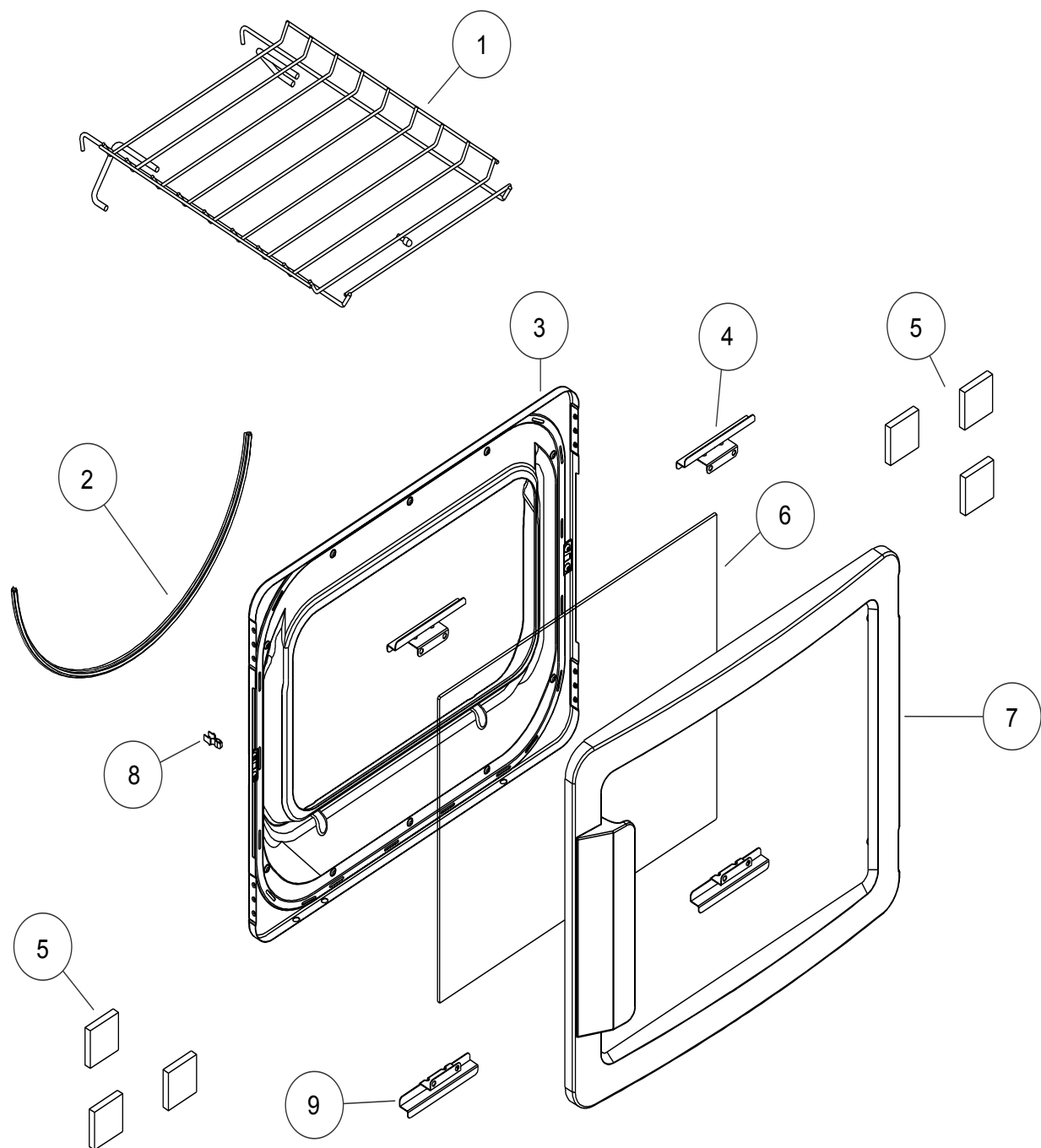
E-mail: customer.care@fisherpaykel.com
tel: 888 936 7872



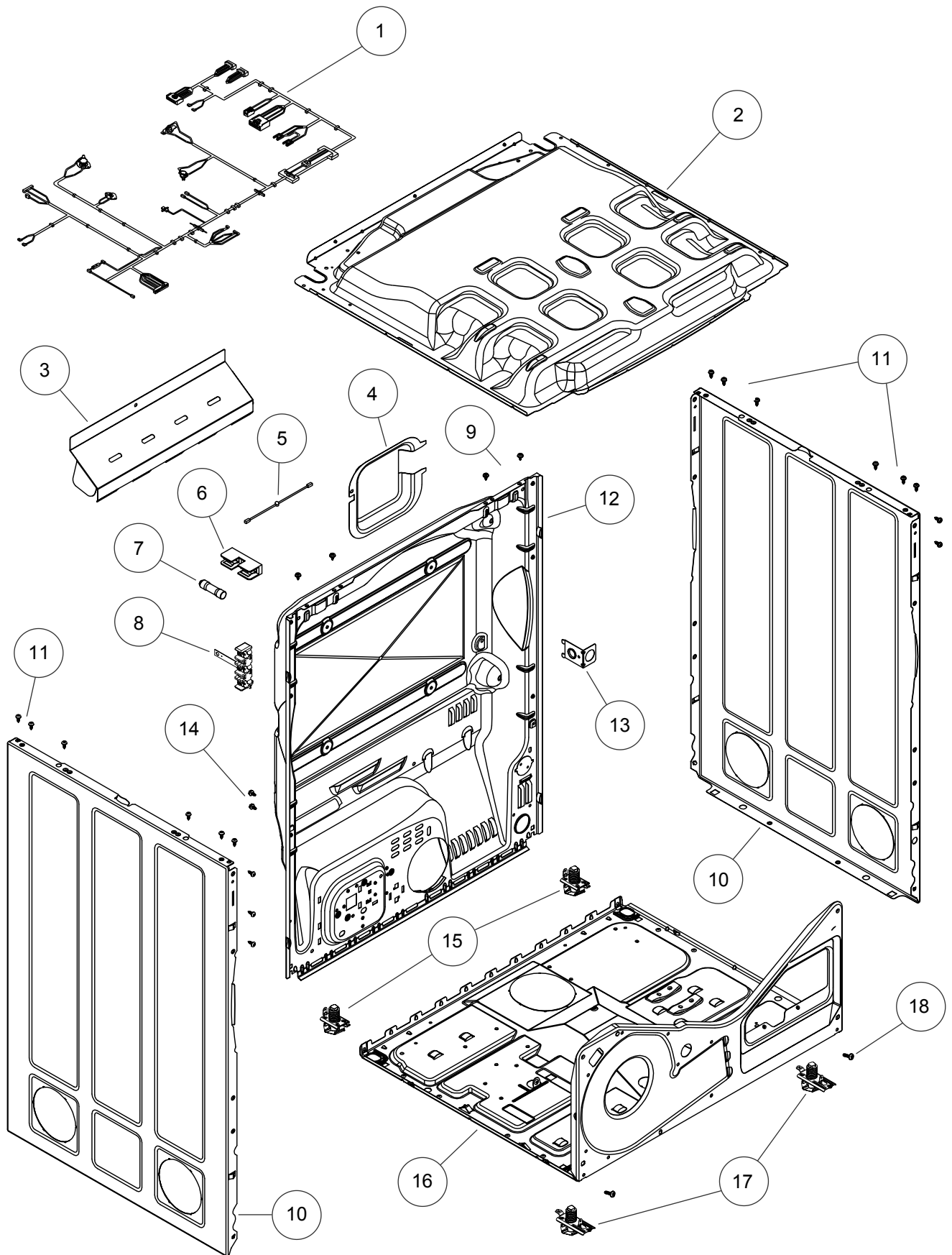
REF.	PART NUMBER	PART DESCRIPTION
1	427946	BRIDGE TRIM AC US 68
2	424115	BEZEL HALO 68
3	424224	DIAL SS AQS/CL ASSY
4	421689P	CONSOLE 68 PKD
5	424126	SEAL FASCIA 68
6	427943	FASCIA IML AC MID US68
7	427944P	MOD DISP OEM US DRYER 68
8	611805P	SCREW ST 8X16 PLASTITE (PKT 10)
9	WW03A00115	PM USE AND CARE MANUAL
10	WW03F00175	HARNESS FCT THERMO
11	WW03L00106	SHIELD COVER BOARD
12	WW03F00182	HARNESS JUMPER
13	WW03F00183	BOARD CONTROL
14	WW03L00105	SHIELD BASE BOARD
15	WW02L00221	COVER DRYER ASM
16	WW03L00147	COVER DRYER
17	WW03L00155	COVER METAL
18	WW03A00121	CHESS SUPPORT
19	WW03A00124	SCREW MAGNET PLATE 10-16



REF.	PART NUMBER	PART DESCRIPTION
1	WW03A00116	TOP BEARING
2	WW02F00131	CLEANING FELT
3	WW03A00015	BEARING SLIDE(WH)
4	WW03A00016	BEARING SLIDE(GREEN)
5	WW02A00067	LIGHTBULB
6	WW02L00104	SOCKET ASM
7	WW02L00033	FOAM SPACER
8	WW03F00184	TRAP DUCT ASM W SENSORS
9	WW02F00094	HARNESS SENSORS (LYRA)
10	WW02F00088	SENSORS
11	WW03A00092	SCR 6-16 B B1Q1 3/4 S ZN
12	WW02L00039	FOAM GASKET
13	WW02L00138	TRAP DUCT FELT
14	WW02L00061	TRAP DUCT COVER
15	WW03A00117	GASKET
16	WW03L00142	PANEL FRONT
17	WW02L00029	HINGE
18	WW02A00065	BUTTON BEAUTY(WH)
19	WW02L00037	DOOR LATCH
20	WW02A00057	STRIKE PLATE (NO HOLE)
21	WW02L00025	DOOR SWITCH
22	WW02A00056	STRIKE PLATE
23	WW02L00080	FILTER AND MESH ASM
24	WW03L00143	END CAP
25	WW02A00028	SCREW-COVER TO TRAP DUCT



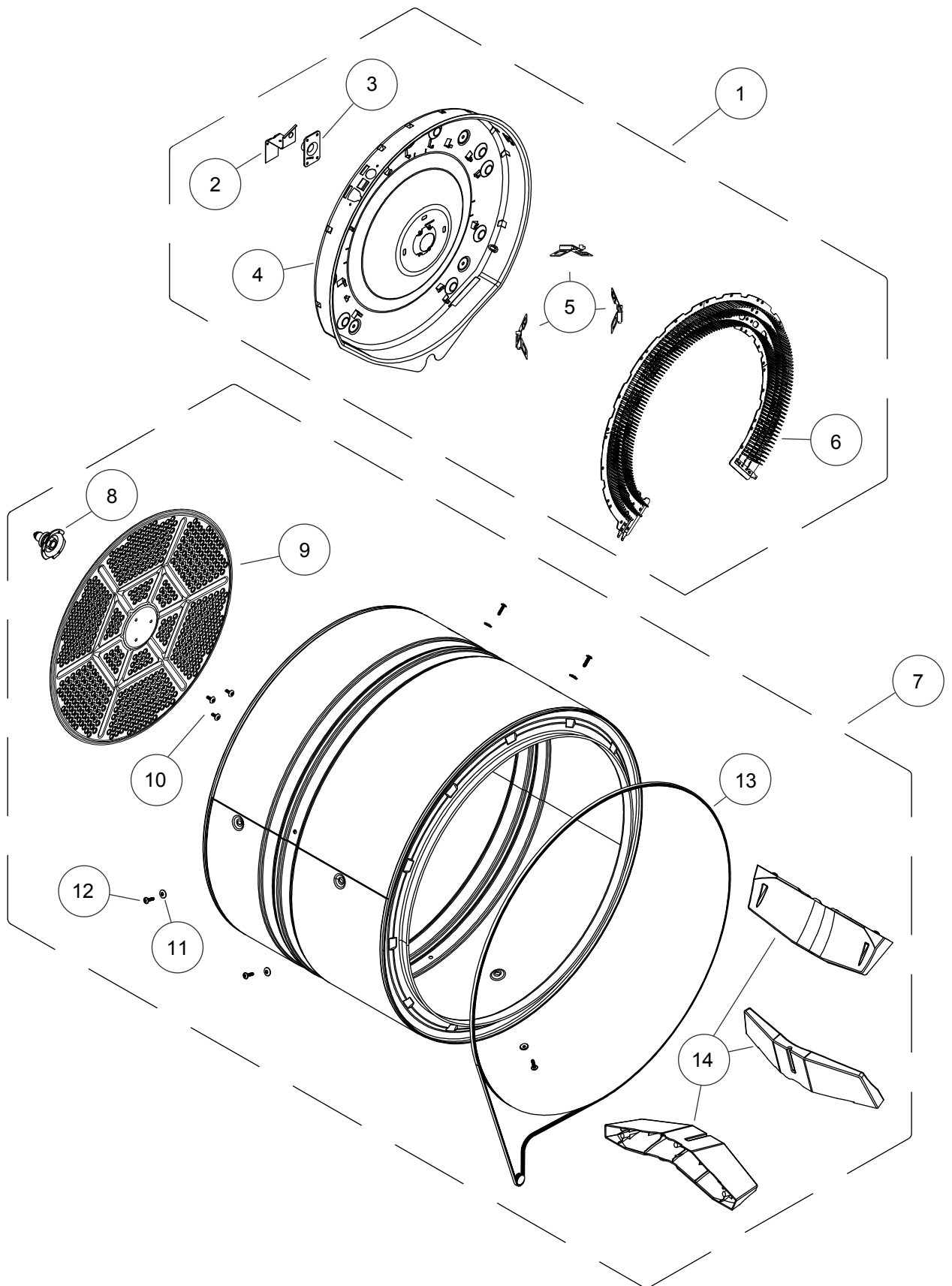
REF.	PART NUMBER	PART DESCRIPTION
1	WW02L00088	SHOE RACK
2	WW02L00145	GASKET DOOR (NOTCHED)
3	WW02L00052	INNER DOOR
4	WW02L00101	WINDOW RETAINER
5	WW02A00120	SHIMS
6	WW03L00145	GLASS TEMPERED
7	WW03L00144	FRAME DOOR
8	WW02A00004	STRIKE DOOR



REF.	PART NUMBER	PART DESCRIPTION
1	WW03F00185	HARNESS ASM ELEC W/THER
2	WW03L00148	SHIELD TOP
3	WW02L00107	REAR HEAT SHIELD (ONLY FOR 7CU
4	WW02L00211	COVER FUSE TERMINAL
5	WW03F00179	HARNESS FUSE HOLDER
6	WW03F00107	FUSE HOLDER
7	WW03F00044	FUSE CCMR 30A 120V
8	WW02F00172	TERMINAL BLOCK
9	WW02A00030	SCREW
10	WW02L00149	SIDE PANEL (WH)
11	WW02A00029	SCREW
12	WW03L00095	REAR PANEL
13	WW03A00122	STRAIN RELIEF BRACKET
14	WW01A00001	SCR 8-18 D HXW 3/8 S (TIERRA)
15	WW03A00119	BRACKET REAR ASM
16	WW02F00076	CHASIS BASE
17	WW03A00118	BRACKET FRONT ASM
18	WW02A00031	SCREW #10 (BAFFLE)



REF.	PART NUMBER	PART DESCRIPTION
1	WW03F00186	HARNESS THERMO
2	WW02L00148	EXHAUST DUCT
3	WW03A00123	BRACKET MOTOR
4	WW02F00003	STRAP MOTOR
5	WW02F00031	MOTOR CLIP
6	WW02F00015	MOTOR & PULLEY ASM.
7	WW02A00026	BLOWER HOUSING TUBE SEAL
8	WW02L00151	PULLEY
9	WW02A00070	SCREW
10	WW01L01163	MOTOR PLATE
11	WW02A00032	SCREW
12	WW03L00150	BLOWER HOUSING 2H FR
13	WW02A00121	SCREW
14	WW01F01162	BLOWER WHEEL



REF.	PART NUMBER	PART DESCRIPTION
1	WW03F00181	MICA HEAT & H ASM 5130 WA
2	WW01A00443	GROUND STRAP ASM
3	WW02A00005	BEARING RETAINER
4	WW03L00152	HEATER HOUSING
5	WW01A00442	BRACKET PROTECTION
6	WW03F00180	MICA HEATER
7	WW03L00156	DRUM & BAFFLE ASM
8	WW02A00019	SHAFT & BRACKET ASSY
9	WW02F00221	DIFFUSER
10	WW01A00456	VIS #10 (DIFFUSER ASS Y)
11	WW02A00002	WASHER
12	WW02A00031	SCREW #10 (BAFFLE)
13	WW02F00028	BELT DRIVE
14	WW03L00153	BAFFLE



www.fisherpaykel.com

Fisher & Paykel

Copyright © Fisher & Paykel 2013. All rights reserved.

The product specifications in this booklet apply to the specific products and models described at the date of issue. Under our policy of continuous product improvement, these specifications may change at any time. Only use this manual if the product code on the front matches the product code on the serial label of the product.