

Smart Drive ® Electronic Washing Machine

Model

IWL12 US FP WH A

Product Code

96154-B



96154-B

PRODUCT

Brand	Fisher & Paykel
Voltage	110V 60Hz
Model	IWL12 US FP WH A
Product Code	96154-B

Fisher & Paykel Appliances
5900 Skylab Road
Huntington Beach
CA 92647
Telephone: 888 936 7872

COPYRIGHT © FISHER & PAYKEL LTD 2005 ALL RIGHTS RESERVED

CONTENTS

TOP DECK AND ELECTRONICS	6
WRAPPER	10
AGITATOR AND HOSES	12
INNER AND OUTER BOWLS AND PUMP	14
MOTOR	16
NOTES	19

GUIDE TO USING THIS MANUAL

The model covered by this manual is listed on the front cover.

The information detailed in this manual is subject to change without notice, the latest version is indicated by the reprint date and replaces any earlier editions.

The front cover picture shows the type of product and may not necessarily be an exact image of the models covered by the manual.

Kit Parts

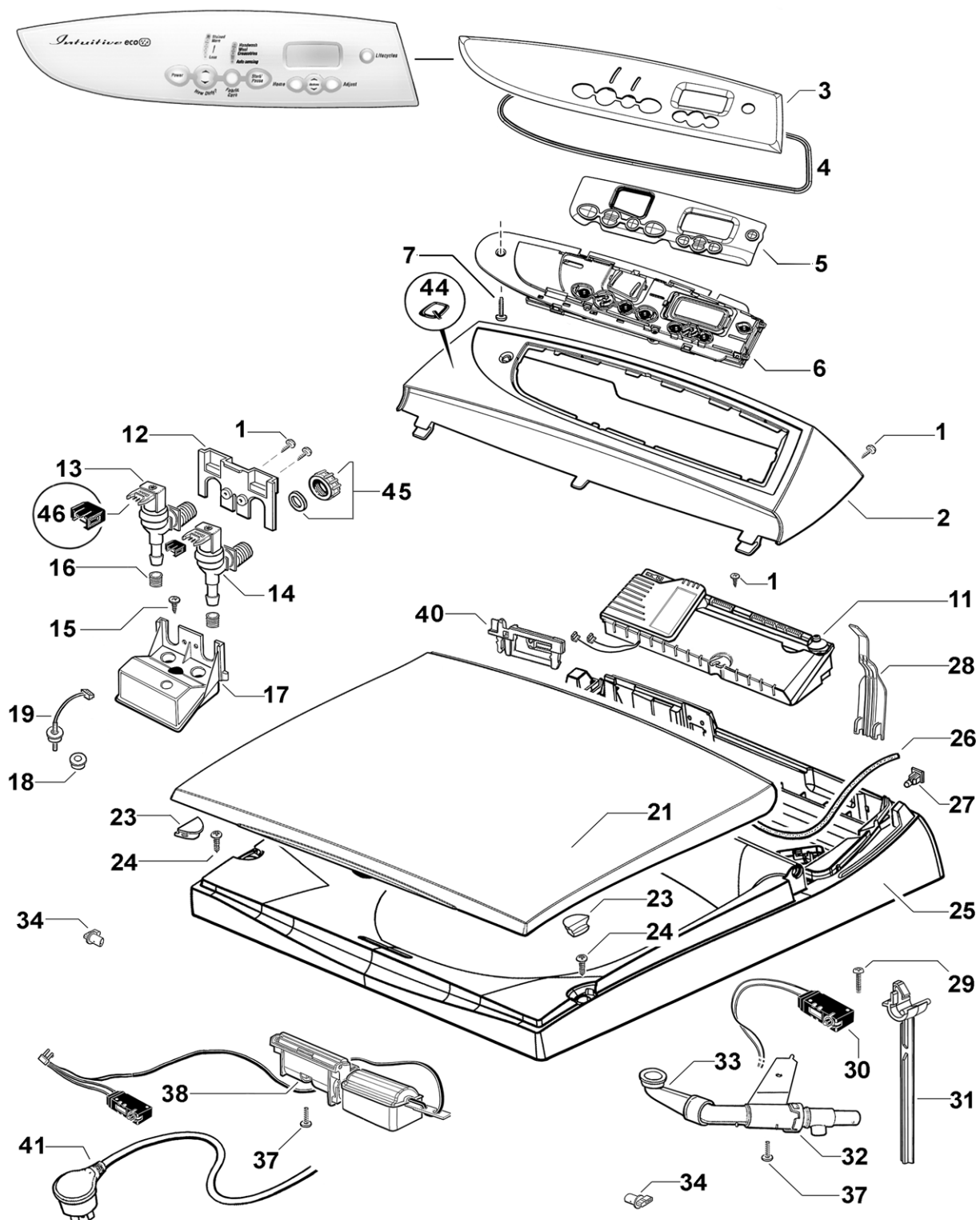
The components shown in *italics with a part number* are those parts in the kit which are available also as separate items. In addition, some parts may be supplied with this kit which are not available as separate items and are therefore either not listed or a part number is not shown against the part description in this manual.

All details relating to Technical Bulletins or Notes are shown on a dedicated page. The Technical Bulletin Number shown relates to the bulletin version which is produced for the Global Service Centres.

Parts List Key

NOT USED	As a part, indicates the diagram part reference is not used in this manual.
<i>italics</i>	Kit components or parts included are shown in <i>italics</i> , refer to above notes: Kit Parts
NI	As a part reference, indicates the part is not illustrated on the diagram.

TOP DECK AND ELECTRONICS

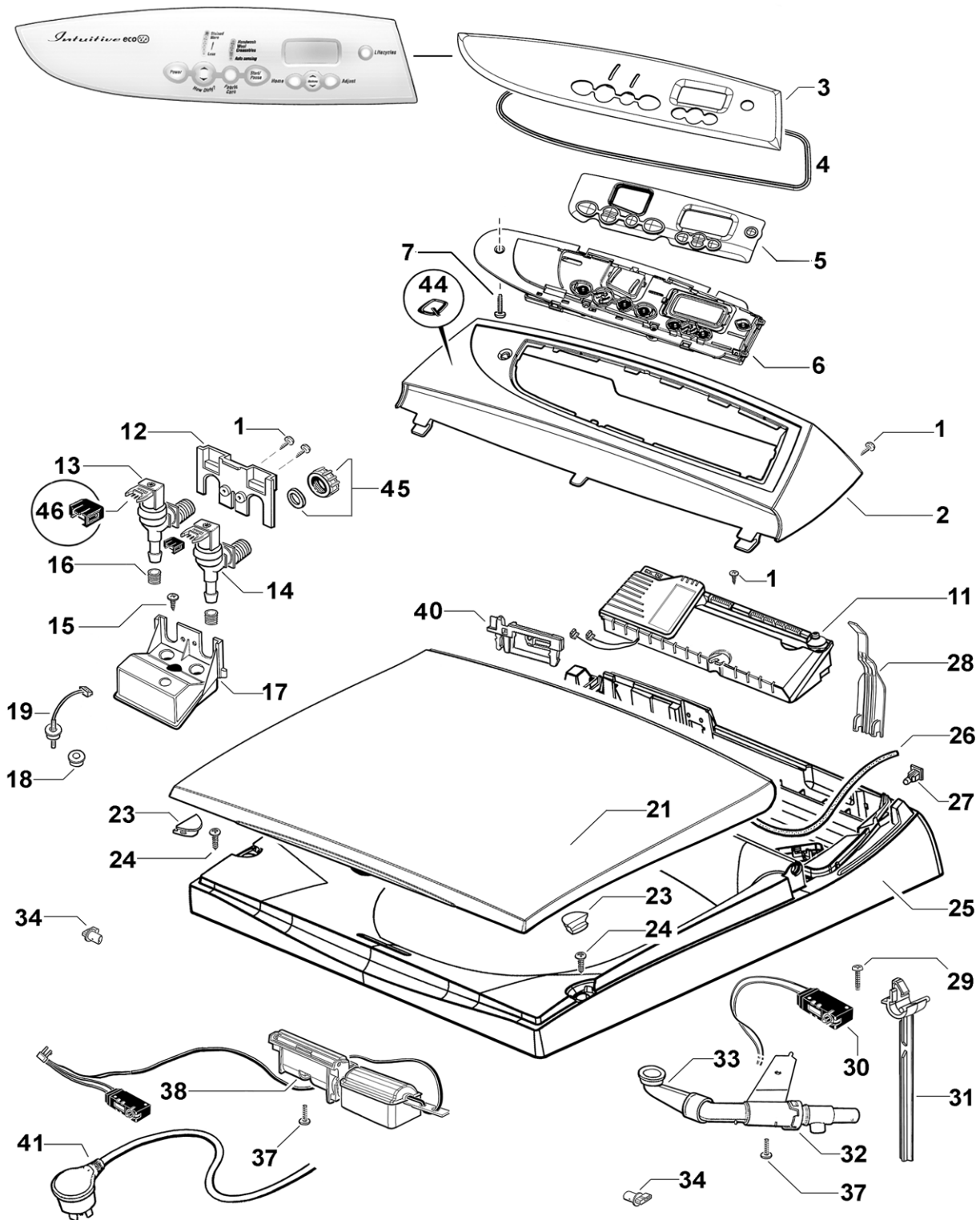


TOP DECK AND ELECTRONICS

REF	PART	DESCRIPTION
1	611933P	SCREW ST 8X5/8 TA MTS PH ZNPL (PKT 10)
2	420115	CONSOLE PRINTED GWL11
3	420155	FACIA ASSY PRINTED IW11, IWL12 ECO
4	420099	SEAL FACIA IWL12
5	426785	BUTTONS IWL12
6	420722P	MODULE IW DISPLAY 120V PH6
7	611803P	SCREW ST 8X25 T25 PAN PH (PKT 10)
11	420094USP	MODULE MC GWL11/IWL12 ECO 120V
12	425339	BRACKET VALVE SD2
13	420238P	VALVE INLET PROPORTIONAL 24V 16L NH
	<i>Includes 425251</i>	<i>SEAL INLET VALVE</i>
14	420237P	VALVE INLET DIGITAL 24V 10L NH
	<i>Includes 425251</i>	<i>SEAL INLET VALVE</i>
15	611986P	SCREW ST 8X20MM HILO PAN PH (PKT 10)
16	425251	SEAL INLET VALVE
17	420845	KIT CHAMBER INLET ASSY SD200
	<i>Includes 420416</i>	<i>SEAL CHAMBER INLET BLANK</i>
	<i>Includes 426752</i>	<i>SEAL THERMISTOR SS</i>
18	426752	SEAL THERMISTOR SS
19	479193P	KIT THERMISTOR & SEAL UL
	<i>Includes 426949</i>	<i>THERMISTOR ASSY SD200 UL</i>
	<i>Includes 426752</i>	<i>SEAL THERMISTOR SS</i>
	<i>Includes 479165</i>	<i>LEAFLET THERMISTOR SD200</i>
21	426796P	LID L11 WHITE PKD
23	426793P	BUFFER LID SD11 (PKT 2)
24	611812P	SCREW ST 10X5/8 MSH PAN PH SS430 (PKT 10)
25	420759	TOP DECK SD14L WH
26	426273	GASKET CONSOLE FOAM CUT
27	422402	NUT SNAP IN SPIRE P0071/05/01/00
28	420133	COVER WIRING TOPDECK SD11
29	611801P	ST M3X18 PLASTITE PAN PH ZNPL (PKT 10)
30	420313	KIT SEALED OOB ASSY
	<i>Includes 420293</i>	<i>MICROSWITCH SEALED 6.3 TABS</i>
	<i>Includes 425772</i>	<i>BRACKET OOB SD2</i>
	<i>Includes 425686</i>	<i>LEVER BALANCE SWITCH</i>
	<i>Includes 420312</i>	<i>CRIMP SPLICE UTILUX H2047/1000</i>
	<i>Includes 621936</i>	<i>TIE CT120M ACTIVE</i>
	<i>Includes 426294</i>	<i>LABEL ADH ZIG ZAG ORANGE</i>
	<i>Includes 420316</i>	<i>LEAFLET KIT SEALED</i>
31	426474	LEVER BALANCE CUPPED
32	420143	NOZZLE ASSY SD11
	<i>Includes</i>	<i>BODY NOZZLE SD11</i>
	<i>Includes</i>	<i>PISTON NOZZLE</i>
	<i>Includes</i>	<i>CAP NOZZLE</i>
	<i>Includes</i>	<i>SPRING NOZZLE</i>

Continued next page

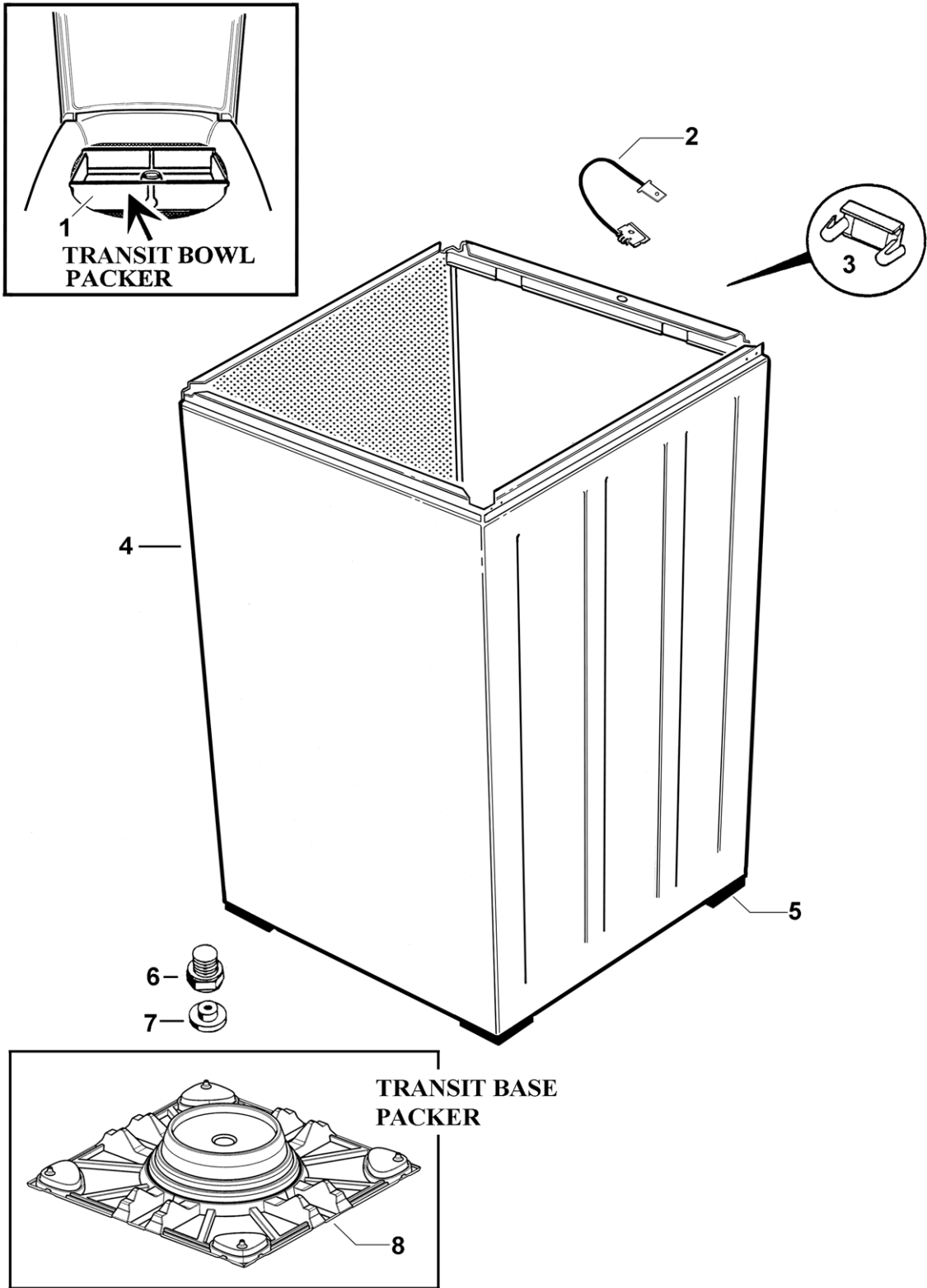
TOP DECK AND ELECTRONICS



TOP DECK AND ELECTRONICS

REF	PART	DESCRIPTION
33	425974	ELBOW NOZZLE SD3
34	426825	HINGE LID SD11
37	611808P	SCREW ST 8X1/2 PAN PH SS 430S (PKT 10)
38	420429	LIDLOCK & HARNESS ASSY SD11
40	420738	CLAMP HARNESS TOP DECK
41	420755	CORD SET SD US STRAIN RELIEF
44	420239	BADGE Q MOULDED MEDIUM
45	388491	CAP VALVE BLANKING
	<i>Includes 420017</i>	CONNECTOR SEAL VALVE CAP
46	420479P	CLIP RETAINING RAST CONNECTOR - INLET VALVE (PKT 2)

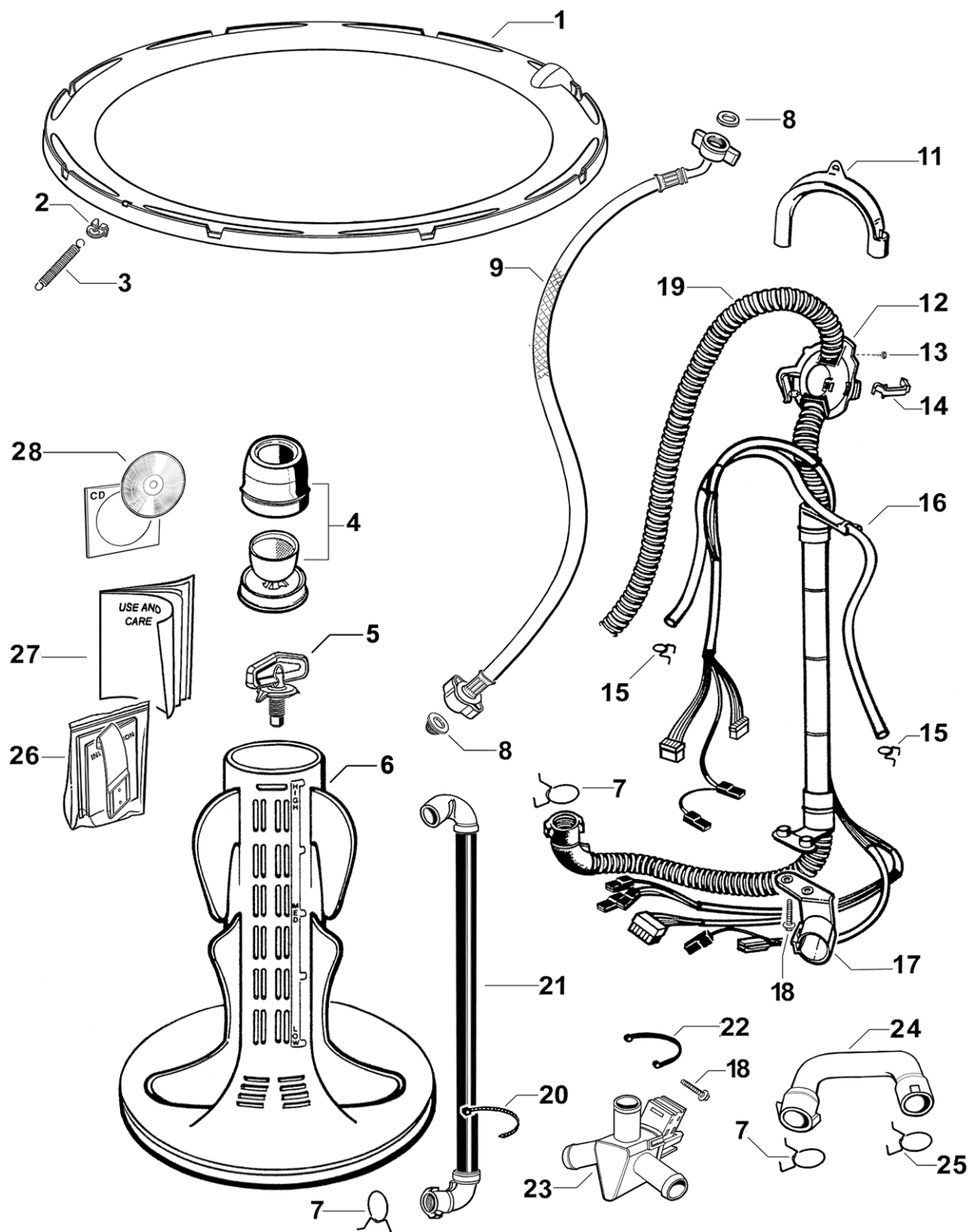
WRAPPER



WRAPPER

REF	PART	DESCRIPTION
1	420071	PACKER BOWL L11
2	426512	WIRE CABINET EARTH SD200
3	426058	COVER EARTH CLIP
4	426663P	WRAPPER ASSY 7 PKD
	<i>Includes 426058</i>	<i>COVER EARTH CLIP</i>
	<i>Includes 426153</i>	<i>FOOT LEVELLING</i>
	<i>Includes 426621</i>	<i>WIRE CABINET EARTH CLIP</i>
	<i>Includes 426657</i>	<i>CORNER CABINET BOTTOM</i>
5	426657	CORNER CABINET BOTTOM
6	472969P	KIT FOOT & INSERT
	<i>Includes</i>	<i>FOOT LEVELLING</i>
	<i>Includes</i>	<i>INSERT FOOT</i>
7	479183	INSERT FOOT (PKT 4)
8	420051	PACKER BTM VAC FORMED USA

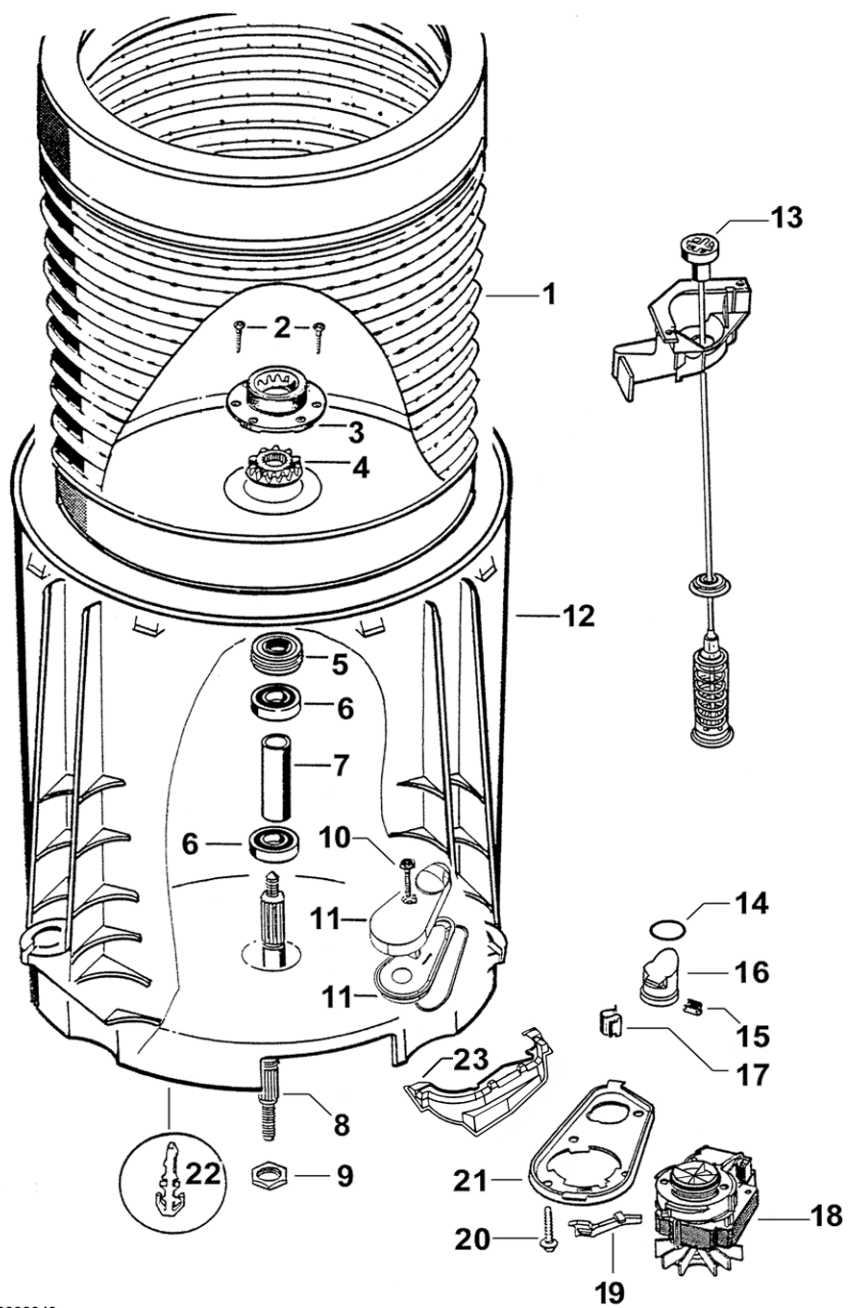
AGITATOR AND HOSES



DWG000038

AGITATOR AND HOSES

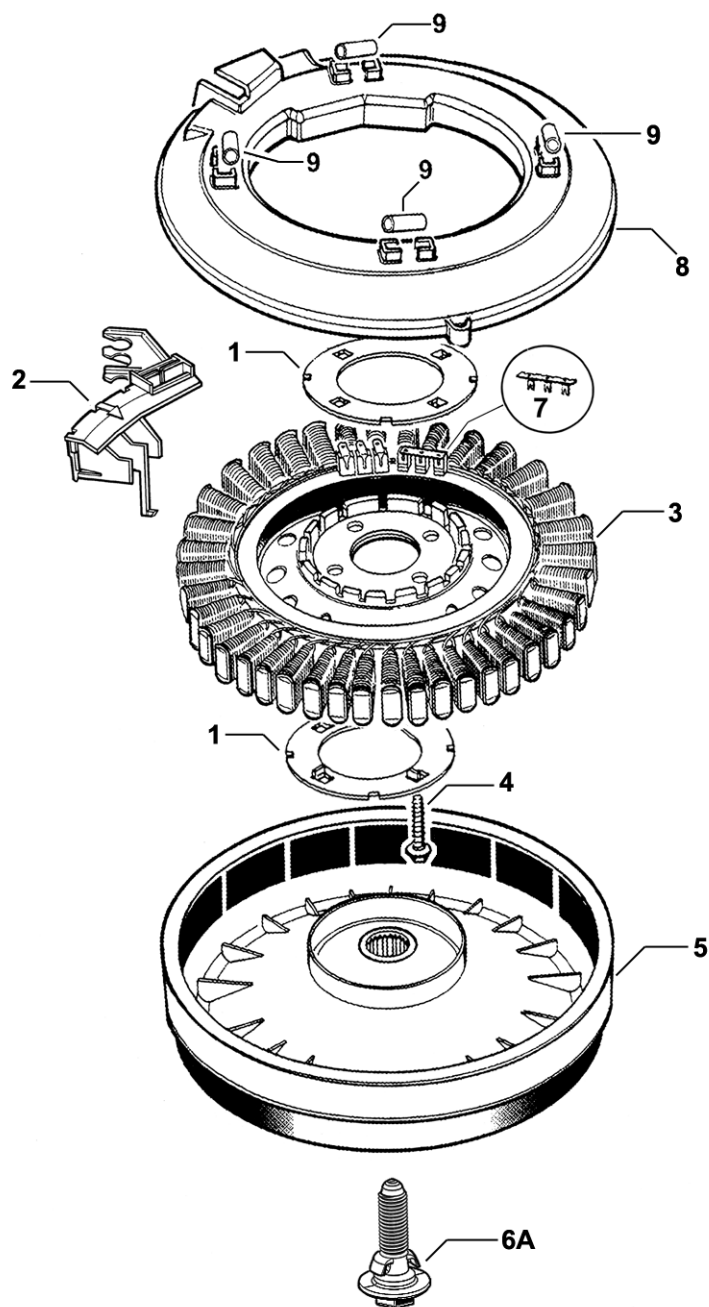
REF	PART	DESCRIPTION
1	426809P	NECK RING ASSY L11
	<i>Includes 426812</i>	<i>NECK RING L11 LT GREY</i>
	<i>Includes 420197</i>	<i>CLIP BIAS SPRING</i>
	<i>Includes 420122</i>	<i>SPRING BIAS</i>
2	420197	CLIP BIAS SPRING SD11
3	420122	SPRING BIAS SD11
4	426993P	DISPENSER ASSY WHITE
5	420665	BOLT AGITATOR
6	425025P	AGITATOR PKD
7	422500	CLAMP HOSE 031.5
8	420016P	KIT FILTER / CONNECTOR SEAL (2 EACH)
	<i>Includes 420016</i>	<i>FILTER INLET MIFLEX (2)</i>
	<i>Includes 420017</i>	<i>CONNECTOR SEAL MIFLEX (2)</i>
9	420079	HOSE INLET ASSY USA NH BRASS MIFLEX
	<i>Includes 420016</i>	<i>FILTER INLET MIFLEX (2)</i>
	<i>Includes 420017</i>	<i>CONNECTOR SEAL MIFLEX (2)</i>
11	422808	GUIDE OUTLET HOSE
12	426455	FIXTURE DRAIN HOSE
13	611933P	SCREW ST 8X5/8 TA MTS PH H5 (PKT 10)
14	425487	CLIP FIXTURE DRAIN HOSE
15	425611	CLAMP HOSE 08.5 TALL GRIP
16	425299	TUBE PRESSURE SENSOR SD2
17	425503	BRACKET DRAIN HOSE
18	425150P	SCREW ST 1/4 X 1" PLASTITE (PKT 10)
19	420126	HOSE & HARNESS ASSY SD11 ECO
20	621954	TIE T30R 150X3.5 HAMER
21	426863	HOSE RECIRC ASSY SD10
22	426958	CLAMP DIVERter VALVE
23	426862P	VALVE DIVERter SD10
	<i>Includes 420301</i>	<i>COVER DIVERter VALVE</i>
	<i>Includes 420311</i>	<i>LABEL – "DO NOT REMOVE COVER FROM VALVE"</i>
24	426695	HOSE PUMP DIVERter
25	422503	CLAMP HOSE 028
26	479273	KIT CATCH LID
	<i>Includes 479263</i>	<i>CATCH LID PARTIAL OPENING</i>
	<i>Includes 479278</i>	<i>TAPE FOAM DIE CUT 46X40X1</i>
	<i>Includes 479272</i>	<i>LEAFLET INSTALLATION CATCH LID</i>
27	420654	BOOK USE & CARE IW12 US-CA
28	420353	COMPACT DISC – ALL US PRODUCT
NI	479314	CARD WARRANTY REGISTRATION ALL PRODUCT NZ/AU

INNER AND OUTER BOWLS AND PUMP

DWG000040

INNER AND OUTER BOWLS AND PUMP

REF	PART	DESCRIPTION
1	426099P	BOWL INNER 700 ASSY PKD
	<i>Includes 425080</i>	<i>SPLINE DRIVEN</i>
	<i>Includes 425131</i>	<i>SCREW CLUTCH (3)</i>
	<i>Includes 425596</i>	<i>SPLINE DRIVE ASSY</i>
2	425131P	SCREW CLUTCH (PKT 10)
3 & 4	479318	KIT SPLINE DRIVE
	<i>Includes 425080</i>	<i>SPLINE DRIVEN</i>
	<i>Includes 425596</i>	<i>SPLINE DRIVE ASSY</i>
5	425009P	LIPSEAL PKD
6	425006P	BEARING 6005LLU PKD
7	425007	SPACER BEARING
8	420794P	KIT SHAFT SHORTENED
	<i>Includes 420664</i>	<i>BOLT ROTOR</i>
	<i>Includes 420665</i>	<i>BOLT AGITATOR</i>
	<i>Includes 479359</i>	<i>INSTRUCTION SHEET</i>
9	425171	NUT BEARING
10	425162P	SCREW COVER (PKT 10)
11	479188P	KIT DRAIN CAP HOOD & IMPELLOR
	<i>Includes 425115</i>	<i>SEAL PUMP CAP</i>
	<i>Includes 420319</i>	<i>IMPELLOR INSERT ASSY</i>
	<i>Includes 426939</i>	<i>CAP PUMP RIBBED</i>
	<i>Includes 426940</i>	<i>HOOD PUMP</i>
12	425925P	BOWL OUTER ASSY 700 PKD (NOTCH TO BE CUT OUT FOR RECIRCULATING HOSE)
	<i>Includes 425006</i>	<i>BEARING 6005LLU</i>
	<i>Includes 425007</i>	<i>SPACER BEARING</i>
	<i>Includes 425009</i>	<i>LIP SEAL</i>
	<i>Includes 425115</i>	<i>SEAL PUMP CAP</i>
	<i>Includes 425162</i>	<i>SCREW COVER</i>
	<i>Includes 426939</i>	<i>CAP PUMP RIBBED</i>
	<i>Includes 426940</i>	<i>HOOD PUMP</i>
13	426750P	SUSPENSION ASSY SQUASHED (PKT 4)
14	425149	SEAL O RING PRESSURE CHAMBER
15	613710	CLIP EDGE
16	425097	PLUG PRESSURE CHAMBER
17	613709	CLIP PIPE UNITED CARR FT19280-ZNPL
18	420325P	PUMP DRAIN 110V 60Hz
	<i>Includes 420319</i>	<i>IMPELLOR INSERT ASSEMBLY</i>
19	425128	CLIP PUMP RETAINING
20	425150P	SCREW ST 1/4 X 1" PLASTITE (PKT 10)
21	425028	BRACKET PUMP
22	472867	CLIP WIRING OUTER BOWL

MOTOR

DWG000043

MOTOR

REF	PART	DESCRIPTION
1	426174P	CLAMP PLATE STATOR LANCED (PAIR)
2	420296P	SENSOR ROTOR POSITION MK 2
	<i>Includes 472867</i>	<i>CLIP WIRING OUTER BOWL</i>
3	426454P	STATOR SD200 PKD
4	426835P	SCREW STATOR (PKT 10)
5	425620P	ROTOR FERRITE PKD
6	420664	BOLT ROTOR
7	425104	BRIDGE TERMINAL
8	425961	SHIELD MOTOR SD UL
9	426145	TUBE BUFFER SHIELD UL

NOTES